

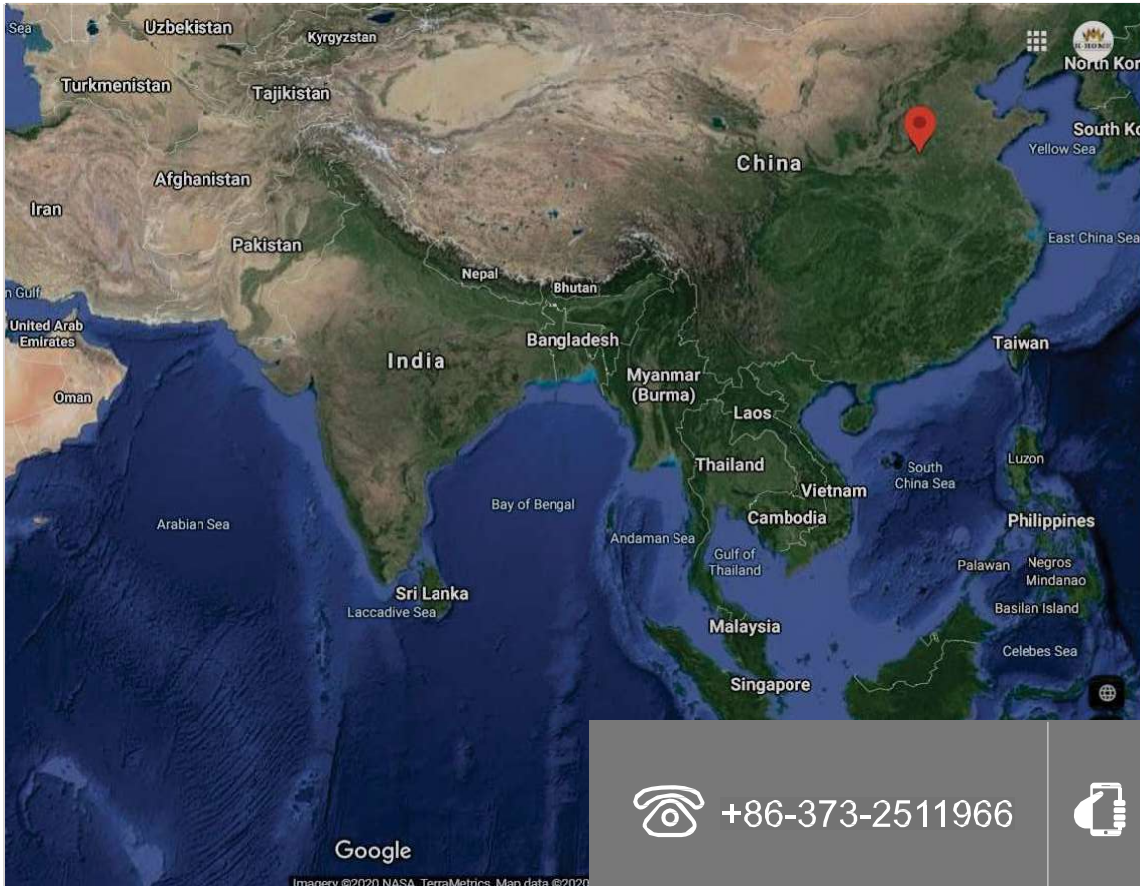
# PORTABLE FIELD TOILET and SHOWER CABIN with WASHBASIN



**Model : KHCT**

河南坤宏钢结构有限公司  
HENAN K-HOME STEEL STRUCTURE CO., LTD

## ABOUT US



### HENAN K-HOME STEEL STRUCTURE CO., LTD

Henan K-home Steel Structure Co.,Ltd is located in Xinxiang, Henan Province. It is a self operating private enterprise, established in the year of 2015. We are engaged in design, project budget, fabrication, installation of steel structure and sandwich panels with second-grade general contracting qualification.

As a result of our high quality products and outstanding customer service, we have gained a global sales network reaching (Philippines, Singapore, Kenya, Nigeria, Spain, Mali, Somalia, Iceland, etc.)...

Xiaodian Industrial Park, Xinxiang City, Henan Province, China

+86-373-2511966

+86-18790630368

info@khomehina.com

## SOME OF OUR DESIGNS



Modular toilet and shower blocks are environmentally friendly, pollution-free, easy to assemble and disassemble, clean and maintain, movable, fireproof, and waterproof. It only takes 2 people about 3 hours to accomplish one standard container installation. It is very simple and easy to operate. It is highly suitable for various humid and corrosive environments. Not only it will greatly save your time and costs, but also have an attractive appearance and promotes green environmental protection simultaneously. Moreover, our dismantlable modular toilet and shower unit have over 20 years of service life.

# PORTABLE FIELD TOILET and SHOWER CABIN with WASHBASIN



## KEY HIGHLIGHTS

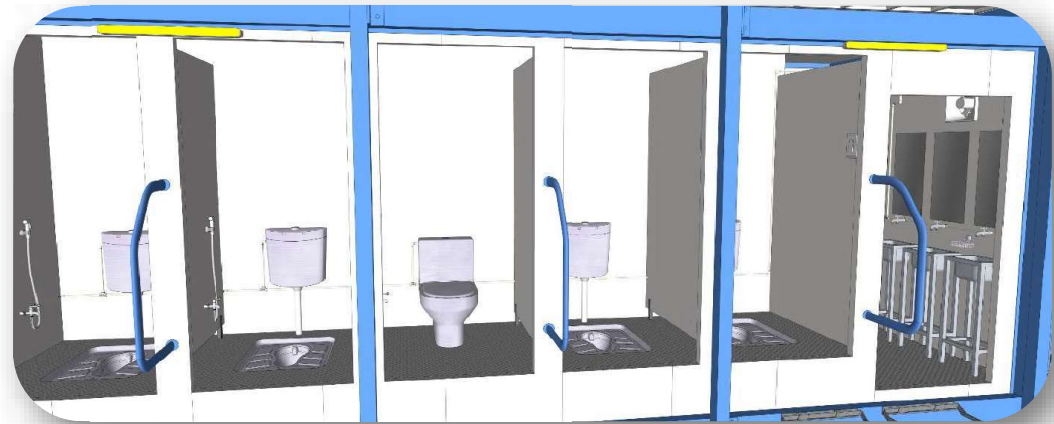
- ⇒ Portable , Dismantable, Easy to use , Convenient to Clean, Requires Small Area.
- ⇒ Goose Neck Trailer: Easier to Maneuver your Modular Toilet and Shower with Washbasin Unit.
- ⇒ Fireproof, Waterproof, Heat Insulation Light weight Sandwich Panel supported by Galvanized Steel Sheet.
- ⇒ 4th Generation Steel Frame.
- ⇒ Your Portable Field Toilet, Shower, and Washbasin Can be Easily fixed & dismantable by Two People.
- ⇒ 12 Framed Steel Fireproof Lock Doors.



## DISMANTABLE TOILET UNIT

Our Dismantable Toilet Unit Includes:

- 50 mm Thick Fireproof, Waterproof, Heat Insulation Light Weight Sandwich Panel supported by Galvanized Steel Sheet Body Material.
- 1000L Fresh Water Tank.
- 2000L Drainage Storage FRP Tank for Solid Waste Storage with Honey Sucker Outlet Port.
- Safe and Sturdy Steps.
- Stainless Steel 4 Indian Pan Type and 1 Western Commode Seat.
- PVC Tap and PVC Plumbing Material.
- Both Inside and Outside Door Locking System.
- One Tap and One Spray jet Inside Module with Flush System for Each Unit.
- Exhaust Fan, Indoor and Outdoor Lights, Electrical Sockets, Light Switch.



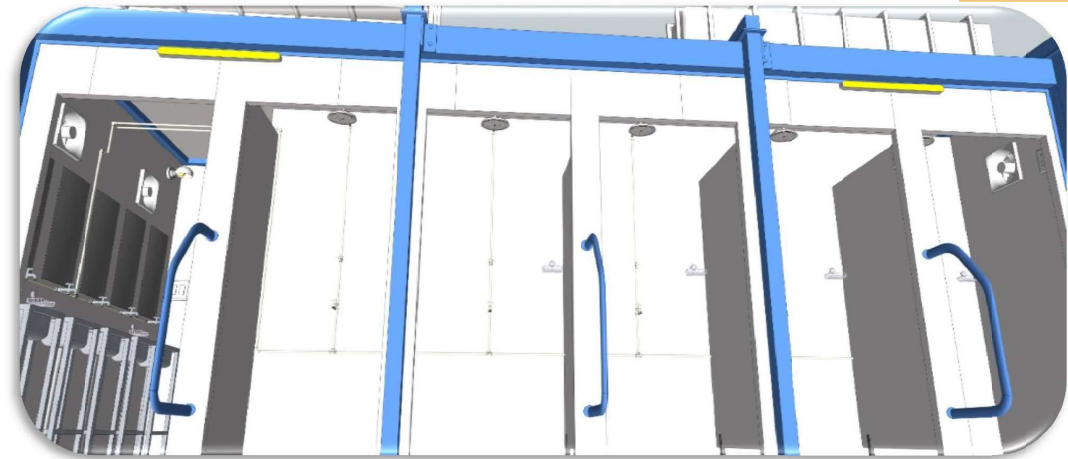
### Data Sheet

S.N	Parameters	Specification
1	Wall Thickness	50 mm
2	Partition Thickness	12 mm
3	Base Thickness	18 mm (Cement Board) + 1.5 mm Patterned Aluminum Plate
4	Door Size	750 x 1800 mm
5	Unit Length	1115 mm (3.65 feet)
6	Unit Width	916 mm (3 feet)
7	Unit Height	2500 mm (8.20 feet)

## DISMANTABLE SHOWER UNIT and WASHBASIN

Our Dismantable Shower Unit and Washbasin Includes:

- 50 mm Thick Fireproof, Waterproof, Heat Insulation Light weight Sandwich Panel supported by Galvanized Steel Sheet Body Material.
- 2000L Fresh Water Tank.
- 2000L Drainage Storage FRP Tank for Liquid Waste Storage with Honey Sucker Outlet Port.
- Safe and Sturdy Steps.
- PVC Plumbing Material and PVC Shower Material.
- Both Inside and Outside Door Locking System.
- Shower Head, Shower Tap, Towel Rack, Soap Dish Holder, Shower Floor Drain, Exhaust Fan, Indoor and Outdoor Lights, Electrical Sockets, Light Switch



### Data Sheet

S.N	Parameters	Specification
1	Wall Thickness	50 mm
2	Partition Thickness	12 mm
3	Base Thickness	18 mm (Cement Board) + 1.5 mm Patterned Aluminum Plate
4	Door Size	750 x 1800 mm
5	Unit Length	956 mm (3.13 feet)
6	Unit Width	916 mm (3 feet)
7	Unit Height	2500 mm (8.20 feet)

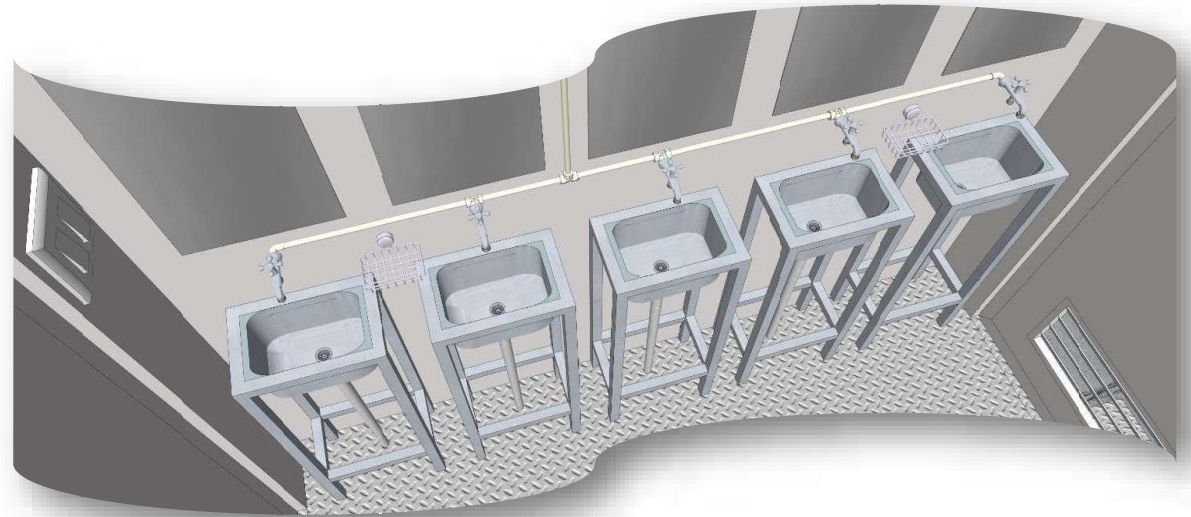
## FRP WASHBASIN (INSTALLATION LOCATION: OUTSIDE of SHOWER ROOM)

DISMANTABLE SHOWER UNIT and WASHBASIN Contd...



Our Washbasin Module includes:

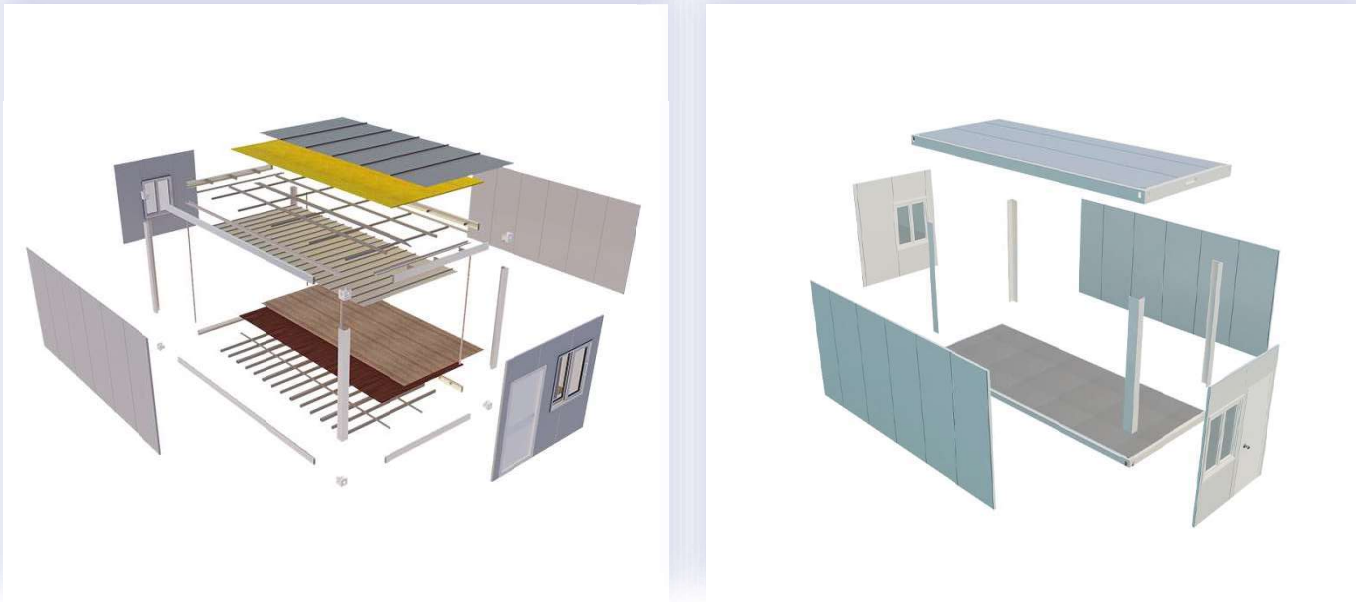
- PVC Tap Material
- Safe and Sturdy Steps.
- Both Inside and Outside Door Locking System.
- Mirror, Exhaust Fan, Indoor and Outdoor Lights, Soap Dish Holder, Electrical Sockets, Light Switch.



### Data Sheet

S.N	Washbasin Parameters	Specification
1	Washbasin size	12 inch x 8 inch
2	Colour	White
3	Material	FRP

DISMANTTABLE FEATURES of  
CONTAINER HOUSE:  
TOILET and SHOWER with WASHBASIN UNIT



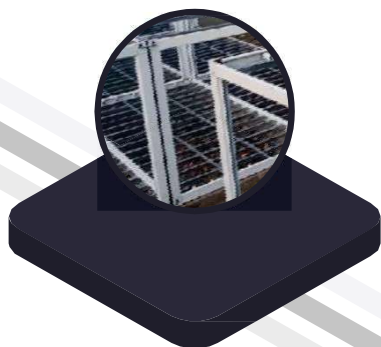
Designed for Easy Dismantling by just Two People. Additionally, to Make our Unit more Portable "*Gooseneck Trailer*" is Provided which Offers a Practical Solution/Mobility for Transporting our Whole Designed Facility Unit without any hassle.



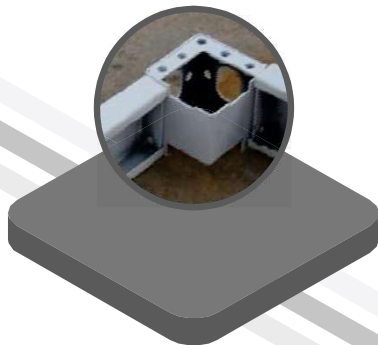
# UPGRADE BRING YOU A BETTER EXPERIENCE

## 4<sup>th</sup> Generation Galvanized Steel Frame

Increased Bottom Purlin



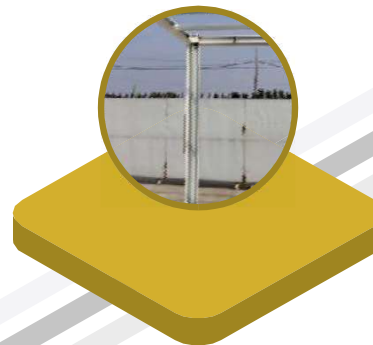
Corner Joints Interface  
Increased



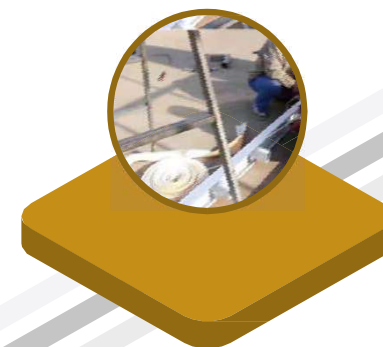
Improved Water Gutter



Added Downpipe



Increased Sealing Strips



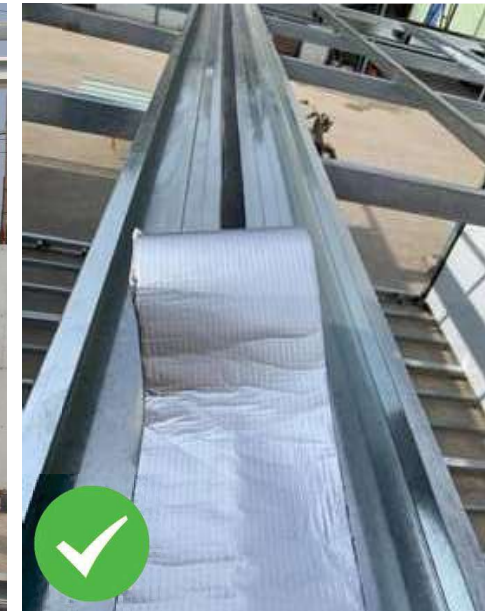
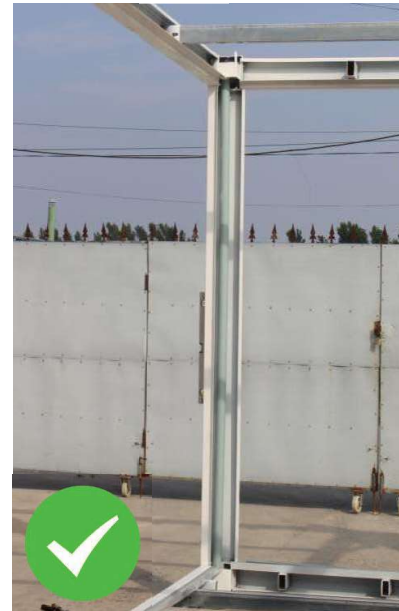
## UPGRADE OF THE PURLINS NUMBER AND SIZE



The previous generation of container toilet and shower unit only had 9 direction purlins at the bottom with no extra support at the bottom. Now, our bottom purlin has been upgraded to 14 short Direction purlins. We have also reinforced the long direction.

In addition to upgrading the number of vertical and horizontal purlins, we also increased the size of the purlins. The size of the commonly used purlin is 40\*80\*2960mm. We upgraded 4 of them to 80\*80\*2960mm purlin to ensure better stability and durability.

## UPGRADE OF RAINWATER TREATMENT SYSTEM



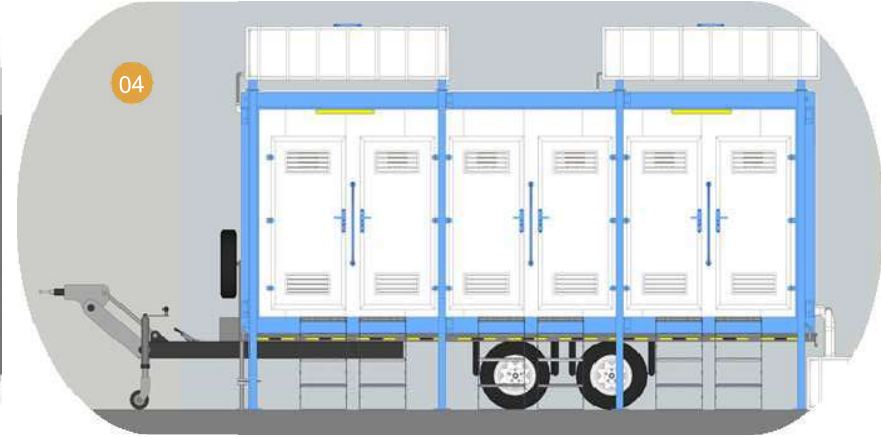
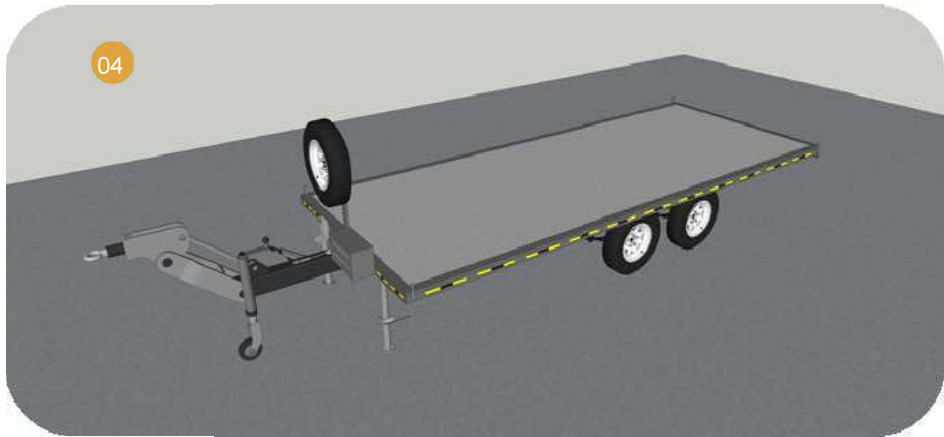
Big water gutter for roof structure. Even for heavy rain, container toilet and shower unit will be very water-proof.

Updated drainage system is more durable. We modified the water drain system, each column are designed and equipped with 4 water drain pipes.

Can easily Solve the problem of rainwater infiltration with butyl tape. We use butyl tape at the junction of two container houses to extend the service life.



## CONTAINER TOILET and SHOWER UNIT With WASHBASIN INSTALLATION SOLUTION



Our container toilet and shower unit with wasbasin have lower geological requirements. According to client's project situation, we will give corresponding suggestions. Here are some situations for your reference:

01 - Place directly on the concrete floor. 02 – Place directly on other stable ground like brick floor.

03 - Use brick and cement for the bottom pillar. 04 - Mount toilet and shower unit with washbasin on the trailer. **12**

# TRANSPORTATION & PACKING





# ■ GET IN TOUCH WITH US

 EMAIL: [info@khomechina.com](mailto:info@khomechina.com)

 TEL & FAX: +86 373-2511966

 WEB: [www.khomechina.com](http://www.khomechina.com)

 ADD: Xinxiang, Henan Province, China